



45 YEARS OF WTS PHILADELPHIA

1979-2024

45TH ANNIVERSARY
WTS
Philadelphia

CONTENTS



03	A WORD FROM OUR 23RD PRESIDENT
04	OUR HISTORY
05	2024 SNAPSHOT
06	2024 EXECUTIVE BOARD
07	WTS THROUGH THE YEARS
09	2024 COMMITTEE LEADERSHIP
10	PRESIDENTS
13	FOUNDATION
14	FUNDRAISING EVENTS
15	MENTORING PROGRAM
17	EMERGING LEADERS
18	GIVING BACK
19	TRANSPORTATION YOU
20	STUDENT CHAPTER
22	AWARDS GALAS
23	PAST AWARD RECIPIENT SPOTLIGHTS
27	45 IN 45
32	2024 SPONSORS

A WORD FROM OUR 23RD PRESIDENT



As we celebrate 45 years of advancing women in the transportation industry, I am deeply honored to reflect on our shared journey and the extraordinary strides we've made together. What began as a mission to create a space for women to network, learn, and grow has cultivated into a powerful movement – WTS Philadelphia.

Over the past four and a half decades, we have worked to break down barriers, challenge stereotypes, and create pathways to leadership for women. Through mentorship, education, and opportunities, we have empowered countless women to rise, excel, and make their mark in the transportation industry.

While we celebrate these incredible accomplishments, we know there is still much work to be done. The need for diversity, equity, and inclusion in transportation remains as important as ever. Our mission is clear: to continue driving change, opening doors, and ensuring that every person, regardless of gender or background, has an equal opportunity to succeed and thrive.

Thank you to everyone who has been an integral part of our story—our members, sponsors, partners, and leaders. Your dedication, passion, and perseverance have been essential in shaping our success. Together, we will continue to drive change, inspire new generations, and lead the way forward.

Onward & Upward,

A handwritten signature in blue ink, reading "Api".

API APPULINGAM, PE, AAE
PRESIDENT, WTS PHILADELPHIA

OUR HISTORY

"WTS Philadelphia is one of the most vibrant chapters in an international organization linking more than 40,000 transportation professionals."

WTS International, originally named Women's Transportation Seminar, launched in 1977. Women were largely discouraged from participating in professional associations – unless the activities were deemed educational. So a group of pioneers whipped up a plan to escape the office – typically during lunch – under the guise of attending a seminar. The goal: to advance women who worked in all levels of transportation, as well as the very industry itself. Sure, there was a learning component, but there was an even greater emphasis on forging connections. WTS Philadelphia emerged two years later on June 21, 1979.

Over the decades, the chapter grew steadily, attracting women and men throughout the five-county Delaware Valley Region. WTS Philadelphia built a reputation for delivering superior networking opportunities, cutting edge programs, and relevant professional development sessions. Today we have more than 70 corporate and agency partners and over 350 members.

The execution might have changed a bit over the years, but the goals remain the same – advancing women and advancing transportation.



SHIRLEY B. ACKERT JOYCE A. CAMPBELL BRENDA T. CONWAY JEAN M. CORRIVEAU KAREN HARDAKER BARBARA THOMAS HARDER MARY E. MEAD SUSAN L. NEYHART JANICE RUBIE LINDA E. SARIS ANNE E. TREADWAY PATRICIA M. VRABEL

THE CHAPTER WAS FOUNDED BY 12 LOCAL WOMEN

WTS PHILADELPHIA

2024 SNAPSHOT



350+
MEMBERS



5,600+
PROFESSIONALS
IN NETWORK



71
CHAPTER
SPONSORS



65+
EVENTS

\$25,000
AWARDED IN ACADEMIC
SCHOLARSHIPS

2024 EXECUTIVE BOARD



PRESIDENT

API APPULINGAM, PE, AAE
CITY OF PHILADELPHIA, DEPARTMENT OF AVIATION



PRESIDENT ELECT

ABBIE GANCZ, PE, LEED AP
URBAN ENGINEERS



VICE PRESIDENT

ALEXIS WILLIAMS, AICP, PP
STV



SECRETARY

TAMARA NICHOLSON, PMP, PGMP
UNICORN CONSULTING SOLUTIONS, LLC



TREASURER

JACLYN WHELAN, PE
CONRAIL



IMMEDIATE PAST PRESIDENT

ERICA ANTOINE, PE
BURNS ENGINEERING

WTS PHILADELPHIA THROUGH THE YEARS

1979 - 2024

JUNE 1979

YEAR FOUNDED



1981

HOSTED NATIONAL
CONFERENCE



1979

1980

1981

1982

1983

1984

1985

1986

1980

INCORPORATION YEAR



1989

10TH ANNIVERSARY
CELEBRATION

10th

1987

1988

1989

1990

1991

1992

1993

1994

1996

INITIATED "WTS ON THE
ROAD" TO INCREASE
CHAPTER PROMINENCE

1995

1996

1997

1998

1999

2000

2001

2002

1995

HOSTED NATIONAL
CONFERENCE



1999

20TH ANNIVERSARY
CELEBRATION

20th

WTS PHILADELPHIA THROUGH THE YEARS

1979 - 2024
CONTINUED

2003

INTRODUCED MENTORING
PROGRAM



2003

2004

2005

2006

2007

2008

2009

2010

2011

TRANSPORTATION YOU
PROGRAM INITIATED



2013

HOSTED NATIONAL
CONFERENCE



2017

EXECUTIVE WOMEN'S
ROUNDTABLE
ESTABLISHED



2018

ESTABLISHED
WTS PHILADELPHIA
FOUNDATION



2011

2012

2013

2014

2015

2016

2017

2018

2019

40TH ANNIVERSARY
CELEBRATION



2020

BYLAWS
RATIFIED



STUDENT
CHAPTER
RATIFIED

2015

2017

FIRST TRANSPORTATION
SEMINAR HELD IN
CONJUNCTION WITH
DELAWARE VALLEY
REGIONAL PLANNING
COMMISSION

2018

SECOND
TRANSPORTATION
SEMINAR HELD IN
CONJUNCTION WITH
CENTRAL PA AND
PITTSBURGH CHAPTERS

2019

2020

2021

2022

2023

2024

2019

INAUGURAL
GOLF
OUTING



2019

EMERGING LEADERS ESTABLISHED

2023

ALLY & INCLUSION
SCHOLARSHIP
ESTABLISHED



2024

45TH ANNIVERSARY
CELEBRATION



2024 COMMITTEE LEADERSHIP

COMMITTEES

AWARDS & RECOGNITION

Director: AnnMarie Vigilante
Chair: Briana Pampuch

CHAPTER RELATIONS

Director: Lindsey Graham Dixon
Membership Chair: Lori Piscopo
Sponsor Recognition Chair: Kristen Weber
VIP Event Co-Chair: Alex Atiyeh
VIP Event Co-Chair: Paige Braude

EQUITY, DIVERSITY & INCLUSION

Director: Jen Waters
Communications Chair: Mia Held
M/W/DBE Expo Co-Chair: Colleen Meiswich
M/W/DBE Expo Co-Chair: Rose Rinker

EMERGING LEADERS

Director: Caitlin Cavanagh
Co-Chair: Lauren Kujawa
Co-Chair: Jessica Herman

EXECUTIVE WOMEN'S ROUNDTABLE

Director: Kiera Crenny

MARKETING & COMMUNICATIONS

Director: Elyse Conti
Chair: Danielle Kauffman

PROFESSIONAL DEVELOPMENT

Director: Faye Majekodunmi
WTS Works Co-Chair: Kirsten Kennedy
WTS Works Co-Chair: Tara Hofferth
TECHnique: Lee Wolfe
LFAL Co-Chair: Shiny Mathew
LFAL Co-Chair: Claudia Aliff

PROGRAMS

Director: Kelly Freeman
Chair: Melissa Cranford

STUDENT OUTREACH

Director: Danielle Schroeder
TRYOU Co-Chair: Gina Venuto-Gabriella
TRYOU Co-Chair: Madelyn Marquardt
Scholarship: Theresa Loux
Student Chapter Co-Chair: Cory Wyffels
Student Chapter Co-Chair: Blaire Miran

ADVISORY COMMITTEES

45 IN 45

Chair: Melissa Chapman
Co-Vice Chair: Allyson Radford
Co-Vice Chair: Jen Duval

LEHIGH VALLEY ANNEX

Chair: AnnMarie Vigilante
Co-Vice Chair: Briana Pampuch
Co-Vice Chair: Silvia Scheuermann

NORTHEAST REGION

Patti Gibson May

PAST PRESIDENT'S CIRCLE

Erica Antoine

STRATEGIC PARTNERSHIPS

Chair: Jenn Walsh
Co-Vice Chair: Lexy McDowell
Co-Vice Chair: Ty McGilberry

WTS PHILADELPHIA PRESIDENTS



1979 - 80

LINDA SARIS
*FOUNDING PRESIDENT
LEAP FOR EDUCATION*



1980 - 82

BARBARA THOMAS HARDER
FOUNDING MEMBER



1982 - 84

PATRICIA M. VRABEL
FOUNDING MEMBER



1984 - 87

DIANTHA L. STEVENS
CONRAIL



1987 - 89

ANNE O. POOLE
CONRAIL



1989 - 91

PAT SMITH-GREEN
*PHILADELPHIA CHAMBER
OF COMMERCE
FIRST AFRICAN AMERICAN
PRESIDENT OF WTS
PHILADELPHIA*



1992 - 93

SUZANNE AXWORTHY
*WHEELS, SEPTA
WTS PHILADELPHIA SCHOLARSHIP
IN HER MEMORY*



1993 - 94

NANCY GREEN, ESQ.
AMTRAK

WTS PHILADELPHIA PRESIDENTS

CONTINUED



1994 - 95

DENISE BAILEY
BAILEY WHITE SOLUTIONS



1996 - 98

ANNA LYNN SMITH, AICP
AMTRAK



2000 - 01

MARY LOU MOORE
AMTRAK



2005 - 06

KAREN GELMAN, MPP, PMP
AMTRAK



1995 - 96

JEANNE CONROY
CONRAIL



1998 - 00

SYLVIA ALSTON
AMTRAK
WTS PHILADELPHIA SCHOLARSHIP
IN HER MEMORY



2001 - 04

DONNA POWELL
PHILAPORT



2007 - 08

CAROL C. MARTSOLF, PE
URBAN ENGINEERS

WTS PHILADELPHIA PRESIDENTS

CONTINUED



2009 - 10

TUMMONA FISHER
PHILADELPHIA REGIONAL
PORT AUTHORITY



2013 - 14

CAROL ROSE, PMP
STV



2017 - 20

PATTI GIBSON MAY



2023 - 24

API APPULINGAM, PE, AAE
CITY OF PHILADELPHIA
DEPARTMENT OF AVIATION
FIRST ASIAN AMERICAN PRESIDENT OF WTS PHILADELPHIA



2011 - 12

ANNMARIE BYRNES, PMP, MBA
PROMATECH, INC.



2015 - 16

MEGAN CLAYTON, PE, PSP
PENNONI



2021 - 22

ERICA ANTONIE, PE
BURNS ENGINEERING

WTS PHILADELPHIA FOUNDATION

The WTS Philadelphia Foundation awards scholarships to women from high school to graduate school who are interested in pursuing careers in transportation. The scholarships are competitive and based on the applicant's specific transportation goals, academic record, transportation-related activities, and other relevant skills. The WTS Philadelphia Foundation is committed to the inclusion of differences and similarities related to ethnicity, age, and gender identity. In 2023, the Ally and Inclusion scholarship was established to recognize individuals pursuing a degree in a transportation-related field who have demonstrated support of women in their personal, professional and/or academic lives.

SCHOLARSHIP PROGRAM

In the past 30+ years, **over 100 students have benefited** from this program and **\$200,000+ has been awarded**. In 2023 and 2024 alone, WTS Philadelphia Foundation granted 25 scholarships which totaled \$46,000.

SCHOLARSHIPS INCLUDE:

- Carmen E. Turner Graduate Scholarship
- Sylvia Aston Graduate Scholarship
- Suzanne Axworthy Undergraduate Scholarship
- WTS Philadelphia Future of Transportation Award
- WTS Philadelphia Ally and Inclusion Scholarship
- WTS Philadelphia Circle of Continuity Award Scholarship

WTS PHILADELPHIA

CIRCLE OF CONTINUITY

Danielle Schroeder

Transportation Engineer - Gannett Fleming

Scholarship Awarded: 2016

Years in WTS Philadelphia: Since 2018

"As a previous winner of one of WTS Philadelphia's scholarships, I can note firsthand how life-changing receiving one of these scholarships can be. Now as the Director of Student Outreach, I oversee the scholarship program, along with our Transportation YOU and Student Chapter and love working with all our WTS Student Outreach volunteers and leads to support our future generation of Transportation professionals."



**SCAN OR
CLICK HERE TO
DONATE TO THE
FOUNDATION
TODAY!**

WTS PHILADELPHIA FUNDRAISING EVENTS

WTS Philadelphia's fundraising efforts benefit future women and minority leaders; the WTS Foundation, our 501(c)(3), was established to aid in developing and championing the next generation of professionals who will lead the transportation industry. We strive to make an impact by raising funds via programming, sponsorships, donation, leaning on our volunteers, mentors, and industry leaders to provide valuable professional opportunities and scholarships for students.



Golf Outing 2019



Night at the Races 2015



Golf Outing 2022



Golf Outing 2023



Night at the Races 2016



Golf Outing 2024



Night at the Races 2016



Golf Outing 2020



Golf Outing 2021

WTS PHILADELPHIA MENTORING PROGRAM

WTS Philadelphia began its long history of facilitating a mentoring program in 2003 with just four mentor-mentee pairs. In 2005, the popularity of speed-dating at the time led to a “speed-matching” event, where interested mentees could rotate around the room and have a few minutes with each potential mentor. Pairs were developed by the committee after reviewing confidential rankings of the speed-matching encounters. While the program has not been in continuous operation since its inception, many relationships fostered as part of the WTS Philadelphia Mentoring program have continued well beyond the formal mentoring period.

In 2024, WTS Philadelphia, in partnership with the Conference of Minority Transportation Officials (COMTO) and the Society of Hispanic Professional Engineers (SHPE) Philadelphia chapters, hosted a 6-month mentoring program. The program aimed to promote cross-collaboration in the industry by bringing together professionals from various regional organizations, fostered meaningful relationships between mentors and protégés, and provided both entry and mid-year professionals with guidance and support outside of their existing networks.

WTS PHILADELPHIA CIRCLE OF CONTINUITY

Mentor/Mentee Spotlight

Elizabeth (Liz) Smith, PE, PMP

Chief of Staff, SEPTA

“I have always believed that as a leader, and especially as female leaders, as we climb the corporate ladder we have a duty to turn around and offer a hand to those climbing behind us. I am deeply grateful to have the opportunity to do this as part of the WTS mentoring program.”

Adrienne Zevin

Project Designer, Sowinski Sullivan Architects

“Liz has helped me with goal setting and making actionable items to achieve them. Liz has taught me to think not one step ahead, but more about overall growth in my current and future roles. I'm excited to share my future accomplishments with Liz, even when the program is over, as she has helped lay the framework for my professional goals and development.”



WTS PHILADELPHIA MENTORING PROGRAM

CONTINUED

The program supported 25 mentee-mentor pairs and facilitated monthly one-on-one discussions centered around career development and personal goal setting. In addition to the one-on-ones, WTS Philadelphia hosted group mentoring sessions to encourage personal growth and career development.

EVENTS

To aid mentees and mentors gain a deeper understanding of themselves and how their personality traits can influence their personal and professional growth, we hosted a group workshop session led by a certified Myers-Briggs Type Indicator (MBTI)

Professional, "**Discovering Your Personality Type**," which allowed participants to understand their motivations, different communication styles, and how to leverage their dominant traits to influence both their personal and professional growth.

The group also hosted "**Constructive Criticism and Feedback**," a group workshop to provide a platform for open dialogue to aid mentees and mentors to create relationships that inspire continuous improvement through feedback and re-orient our perspectives regarding criticism and feedback. The panel featured esteemed panelists from industry-leading organizations.

CONGRATULATIONS TO ALL



WTS PHILADELPHIA EMERGING LEADERS



Established during WTS Philadelphia's 2019-2020 term, Emerging Leaders is a forum for professional women in the early stages of their careers. This intimate cohort group is selected at the beginning of each term and meets regularly to discuss topics of relevance related to professional and personal development.

Participants include engineers, planners, researchers, marketing gurus, admin specialists, financial experts, architects, construction managers, train conductors, etc. The diversity of this group is what adds an extra layer of value.

WTS PHILADELPHIA CIRCLE OF CONTINUITY

Lily Reynolds, AICP

Director of Federal Infrastructure Strategy
City of Philadelphia, OTIS

Years Participated in Emerging Leaders Program:
2021 - 2022

Years in WTS Philadelphia: Since 2019

“WTS provides meaningful connection to other leaders at different career stages in a welcoming environment. From the first WTS event I attended I thought, ‘wow, this is different, it really is about centering women and celebrating diversity’.”



WTS PHILADELPHIA GIVING BACK

We recognize the importance not only of fundraising, but also giving back to and providing support for other groups that need an extra boost. We take pride in the connections we have built with organizations whose values align with WTS's mission. Examples of other organizations and initiatives we formally support include: Back on My Feet, Conference of Minority Transportation Officials (COMTO), Hub of Hope, Metropolitan Area Neighborhood Nutrition Alliance (MANNA), March of Dimes (MoD), and United Service Organizations (USO).



Hub of Hope 2024



USO Golf Outing 2023



Keystone Golf Outing 2017



COMTO Scholarship Luncheon 2023



MoD Bingo 2019



MANNA 2024



PHL 5K 2024



COMTO Golf Outing 2023



Back on My Feet 2017



WTS PHILADELPHIA TRANSPORTATION YOU

Transportation YOU is a hands-on, interactive, and free mentoring program that offers young women ages 13-18 an introduction to a wide variety of transportation careers. Through the program, WTS chapters work to make a difference in the lives of young girls by offering programs and activities that will spark their interest in all modes of transportation, encouraging them to take courses in math, science, and technology, which are the stepping stones to exciting careers that can change the face of the transportation industry.

Our program is led by over 30 professional women (engineers, planners, marketing, and finance professionals) who volunteer their time as mentors.

Throughout the program year, both mentors and mentees have the opportunity to explore what makes the transportation industry so important and learn about how it impacts their every lives.

WTS PHILADELPHIA

CIRCLE OF CONTINUITY

Madelyn Marquardt, EIT

Engineer in Training - Bridge, Urban Engineers

Years Participated in TrYOU: 2015 - 2016

Years in WTS Philadelphia: Since 2021

"In a male-dominated profession lacking in female peers and role models, it is often organizations and events such as TrYOU and the Capital Summit that make a major difference in a young woman feeling capable and supported. Having the chance to now help lead a program that I was once a mentee in is a unique opportunity for me to be a role model for students who find themselves in a situation similar to myself not all that long ago. I hope to replicate the safe space and like-minded community for pursuing your goals that was created for me through the dedication of time by others."



WTS PHILADELPHIA STUDENT CHAPTER



"My exposure to WTS in high school was a key reason that I chose to pursue engineering in college. I've continued to be involved in the student chapter and have learned so much about the transportation industry, polished my leadership skills, and made invaluable connections and friends."

Emily Simkovich

WTS Student Chapter Vice
President, 2021 - Present
Drexel University, B.S./M.S.
Mechanical Engineering

The WTS Philadelphia Student Chapter was established in 2015 with a mission of supporting and mentoring women in post-secondary school with an interest in transportation. Through intentional outreach and dedication from past and present Student Chapter Co-Chairs, membership has grown to 12 schools (including trade schools) and over 60 members! Along the way, we began holding sessions conducting resume workshops and sharing a yearly Resume Book with chapter sponsors. Additionally, each semester, we host professional development, networking, and project site visit events for students. The Student Chapter also shares quarterly newsletters and manages active social media accounts.

In 2020, the Student Chapter established a yearly Mentor Program. This year, we supported 20 mentee/mentor pairings - a record for the program. Student Chapter representatives work closely and partner with TrYOU, Scholarship, and WTS Works to continue the pipeline from high school to college, provide students with access to scholarships, and assist in pairing students in summer internships and shadowing opportunities.



WTS PHILADELPHIA STUDENT CHAPTER

CONTINUED

CURRENT PARTICIPATING SCHOOLS



"WTS adds so much value for me! In addition to the great networking opportunities and professional development activities, WTS also offered me a chance to get mentored by a transportation professional with whom I was matched based on my interests and future goals. Most importantly, WTS provides me a proven fact about what women can add to the transportation field profession and how balanced and equitable it gets with them involved."



Ruqaya Alfaris

2024 WTS Student Chapter President
Rowan University, Doctor of Philosophy - PhD, Civil Engineering

WTS PHILADELPHIA AWARDS GALAS

Celebrating our successes and our second-to-none award recipients, is our favorite way to end each year. Shining a light on the individuals, organizations, and teams that have propelled women and helped create a more diverse, inclusive, and equitable industry is something we will never outgrow. Thanks for joining us for all of these amazing events!



WTS PHILADELPHIA

PAST AWARD RECIPIENT SPOTLIGHTS

PHILADELPHIA AWARD

Honors an individual, group, or organization for extraordinary efforts to promote the transportation industry and people within the Philadelphia area.



HAPPY FERNANDEZ
CITY OF PHILADELPHIA, 1994

Philadelphia City Council Woman from '92 - '98 and first female mayoral candidate



FAYE MOORE
SEPTA, 2007

First woman and the first African American to serve as General Manager of SEPTA

MEMBER OF THE YEAR

Honors a WTS Philadelphia member who has made extraordinary contributions to the success of the organization.



SYLVIA ALSTON
AMTRAK, 1996

Sylvia Alston dedicated her life to transportation and supporting women in transportation. Sylvia spent over 20 years at Amtrak. She had an extraordinary commitment to WTS. The Chapter honors her commitment to WTS by naming a graduate scholarship in her name.



PATTI GIBSON
2010

Patti Gibson May has been an integral member of WTS Philadelphia, providing a lasting impact on recruitment, standard operating procedures, and the mission of advancing women and minorities in transportation. Ms. Gibson May is a member of the WTS Philadelphia Board, and served as our 21st WTS Philadelphia President.

WTS PHILADELPHIA PAST AWARD RECIPIENT SPOTLIGHTS

CONTINUED

WOMAN OF THE YEAR

Honors a woman who is an outstanding role model and has contributed to the advancement of women and minorities in transportation.



RINA CUTLER

PENNDOT (AT THE TIME OF AWARD), 2005

Served as Senior Director of Major Station Planning for Amtrak, Deputy Mayor for Transportation for Mayor Michael Nutter, Deputy Secretary of Administration for PennDOT and Executive Director of the Philadelphia Parking Authority for Mayor Ed Rendell.



LESLIE RICHARDS

MONTGOMERY COUNTY COMMISSIONER (AT THE TIME OF AWARD), 2013

Served as the CEO & General Manager of SEPTA, was a member of the Montgomery County Board of Commissioners and was Secretary of PennDOT. Leslie was also recognized by WTS International as Woman of the Year in 2014.

INNOVATIVE TRANSPORTATION SOLUTION AWARD

Salutes an innovative transportation project led by a woman or group of women that improves the quality of life for its users and the community.



RACK 'EM UP

PHILADELPHIA PARKING AUTHORITY, WTS PHILADELPHIA, OTIS, DVRPC, PHILADELPHIA FIRE DEPARTMENT, OFFICE OF EMERGENCY MANAGEMENT, 2021

This friendly design competition promoted innovation and creativity in regard to the development of a bike corral design that maintains fire hydrant access.



DELDOT APP

STATE OF DELAWARE, 2013

The Web Team created a DelDot application for SmartPhones and mobile devices. This application makes all features shown on the department's website - deldot.gov - available via on iPad, iPhone or Andriod.

WTS PHILADELPHIA

PAST AWARD RECIPIENT SPOTLIGHTS

CONTINUED

SECRETARY RAY LAHOOD AWARD

Honors a man who is a leader in transportation and has contributed toward the advancement of women and minorities in the industry.



MICHAEL CARROLL, PE
CITY OF PHILADELPHIA, OTIS, 2017

Serves as the Deputy Managing Director for Philadelphia's Office of Transportation and Infrastructure Systems (oTIS). Michael is a creative and nationally respected leader with more than 25 years of experience in transportation.



JAMES MALONEY, PE
SENIOR VICE PRESIDENT, JMT, 2023

As JMT's Regional Manager for Pennsylvania and Ohio, Jim leads a team of 400 individuals whose skillsets span transportation, construction management, water, buildings and facilities, and natural/cultural resources.

ROSA PARKS DIVERSITY LEADERSHIP AWARD

Honors an individual, group, or organization that has made significant contributions in promoting diversity and cultural awareness within their organization, the transportation industry, or in a project or activity that supports the goals and mission of WTS.



BEVERLY HARPER AND PORTFOLIO ASSOCIATES
2008

Portfolio Associates is a recognized expert in private and public sector community relations and public information programs. Founded in 1969 by Beverly A. Harper, Portfolio is minority-owned and -operated.



COMTO
2018

Their mission is to ensure opportunities and maximum participation in the transportation industry for minority individuals, veterans, people with disabilities and certified MWDBE businesses through leadership training, professional development, scholarship and internship funding, political advocacy, partnership building and networking opportunities.

WTS PHILADELPHIA

PAST AWARD RECIPIENT SPOTLIGHTS

CONTINUED

EMPLOYER OF THE YEAR

Honors a company, non-profit, association, or government agency for recruiting, retaining, and advancing women and minorities.



MILLIGAN AND COMPANY, LLC 1996

Milligan & Company solves the most complex financial, accounting, operational and management challenges for small and medium businesses, public corporations, not-for-profit organizations, government entities and individuals.

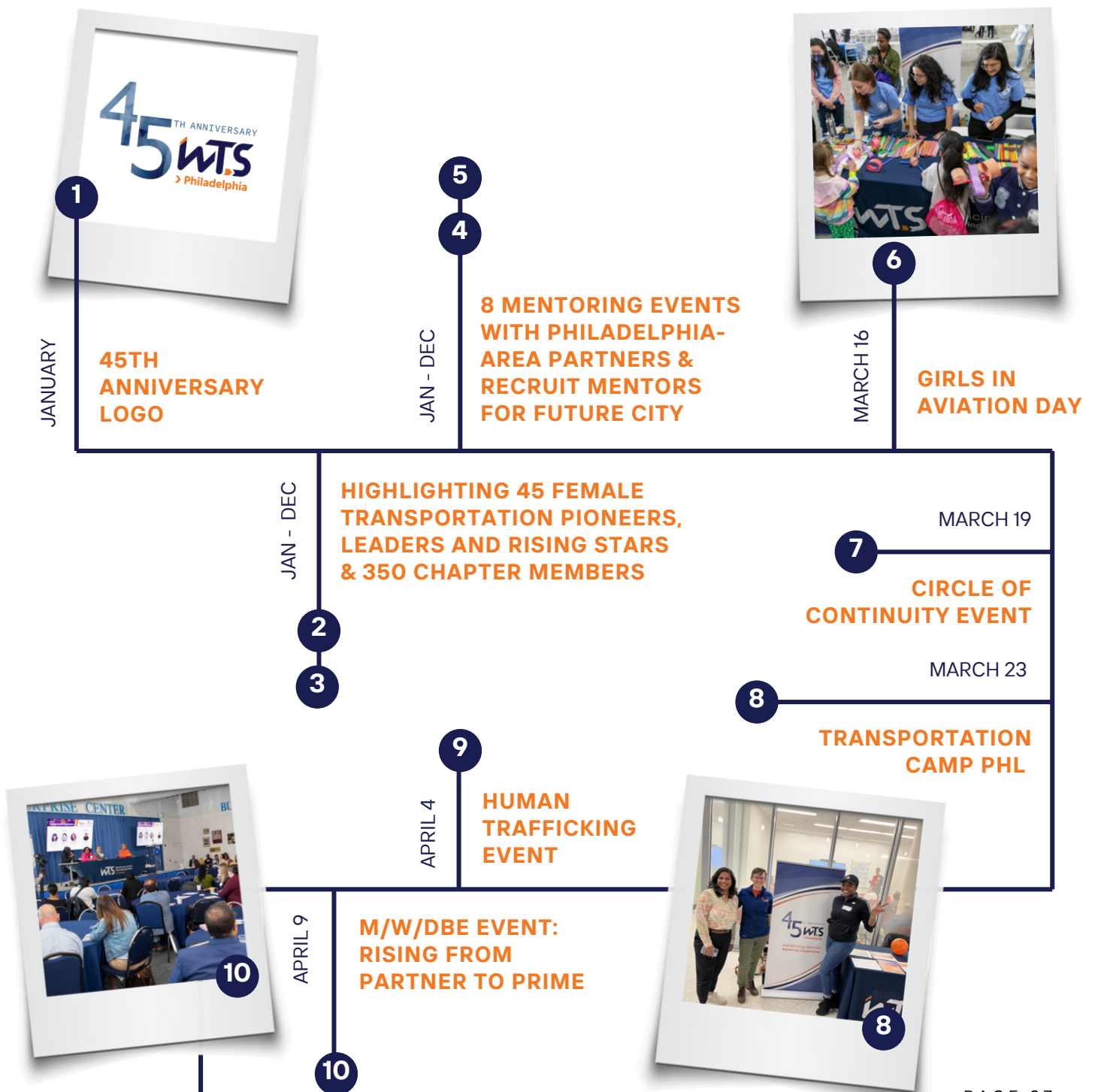


PHILADELPHIA INTERNATIONAL AIRPORT 2011

Philadelphia International Airport is the primary international airport serving Philadelphia. It served 28 million passengers annually in 2023, making it the busiest airport in Pennsylvania. The airport offers nearly 500 daily departures to more than 130 destinations worldwide.

WTS PHILADELPHIA 45 IN 45

A Campaign Created to Celebrate Our Achievements



WTS PHILADELPHIA

45 IN 45

CONTINUED

11

APRIL 26

**ECLOSE STEM
INITIATIVE**



12

APRIL 29

**AAAE/WTS
WOMEN IN
AVIATION PANEL**

13

April 29

**LADIES' GOLF
CLINIC & MINI-
TOURNAMENT**



13

LEARN FROM
A LEADER

14

MAY - AUGUST

**LEARN FROM A LEADER
EVENT SERIES WITH
PAST PRESIDENTS**

17

MAY 9

**GOLD CIRCLE
OF EXCELLENCE
RECOGNITION**

JUNE 17

**MENTORING
PROGRAM
GRADUATION**

18



16

MAY 8

**PHILADELPHIA
CHAPTER DINNER AT
WTSI ANNUAL
CONFERENCE**

MAY 3

**EARTH DAY
CLEAN UP
AT PHL**

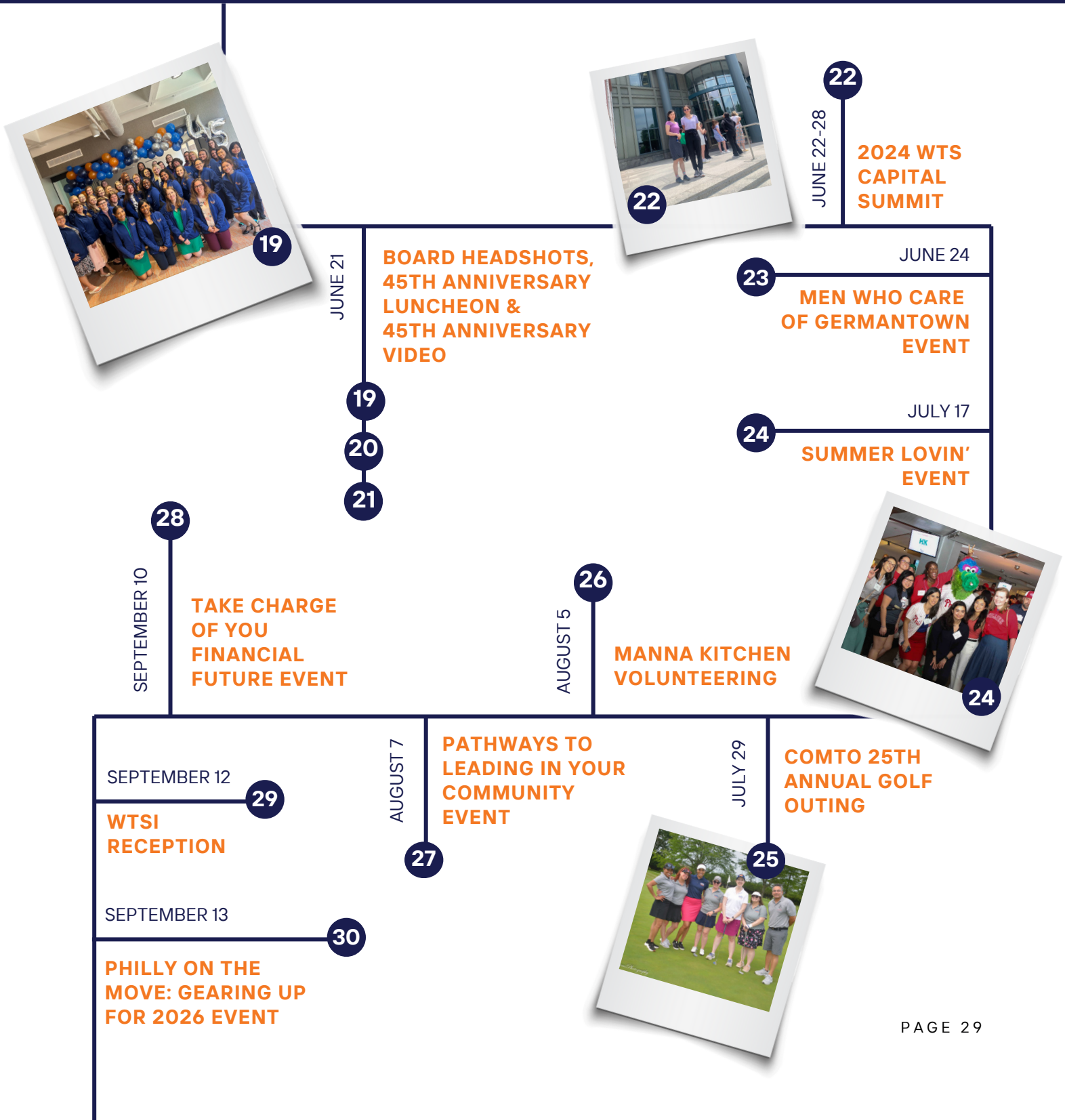
15



WTS PHILADELPHIA

45 IN 45

CONTINUED



WTS PHILADELPHIA

45 IN 45

CONTINUED

34

SEPTEMBER 28

**ALL MODES
(A LA MODE)
EVENT**

32

SEPTEMBER 19

**6TH ANNUAL
GOLF OUTING**

SEPTEMBER 14

31

**PHL 5K
RUN/WALK**

OCTOBER 11

35

**MINORITY
ENTERPRISE
DEVELOPMENT
WEEK EVENT**

September 20

**PARK(ING) DAY
EVENT**

33



32



OCTOBER 15

36

**WOMEN'S
HEALTH
EVENT**

OCTOBER 21

**MENTORING
AT MPACT
CONFERENCE**

37



OCTOBER 29

**BACK TO BASICS:
THE USE OF
PRONOUNS**

38

OCTOBER 29

**EMERGING
LEADERS
TOUR SEPTA
COMMAND
CENTER**

39



WTS PHILADELPHIA 45 IN 45

CONTINUED



40

NOVEMBER 18

**HUB OF HOPE
(PROJECT HOME)
VOLUNTEERING**

40



41

NOVEMBER 21

41

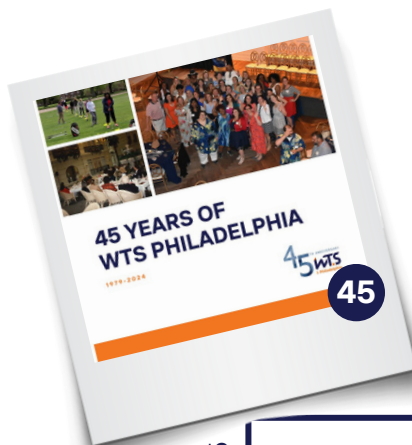
**COMMUNITY
BABY SHOWER
WITH MARCH
OF DIMES**



42

November 25

**AWARD
\$25,000 IN
SCHOLARSHIPS**



45

DECEMBER 5

**45TH
ANNIVERSARY
REPORT**

45

DECEMBER 5

**NEW AWARD
CATEGORY:
SAPPHIRE &
SAPPHIRE
AWARDS GALA**

43

44



44

WTS PHILADELPHIA 2024 SPONSORS

SAPPHIRE

Jacobs



PLATINUM

AECOM



GPI



HDR

HNTB



TRAILBLAZER

Burns



CHAMPION



ADVOCATE



Bowman



CDM Smith



Faith Group



GLOBAL PROGRAM PARTNERS
CH2M HILL • DHA • CMTS
A Joint Venture



LANGAN



TRANSYSTEMS

TYLin



W/M/S/DBE



AGENCY PARTNERS

